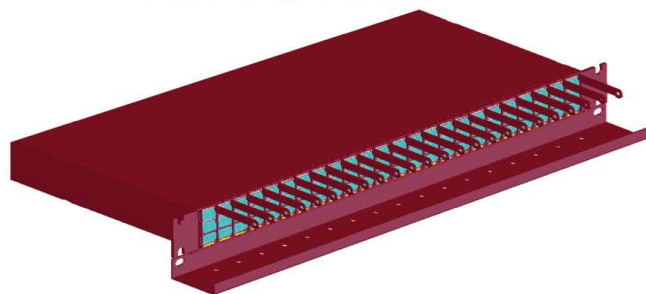


# Modular Fiber Tap System

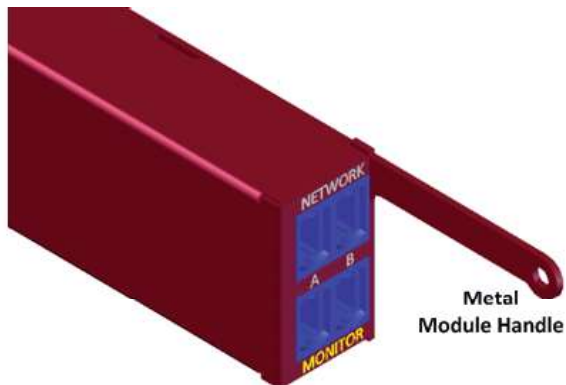
## Tap up to 24 links 1G to 100G\*

FTC-24 chassis with LC modules and FTCT-24 cable management tray

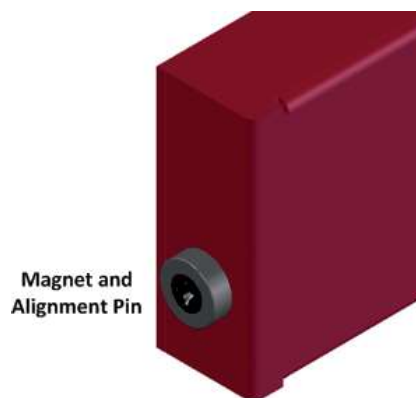


Ideal for security, network monitoring and analysis - anywhere that high density and maximum flexibility are required for monitoring multiple fiber links

This high density passive Tap system provides permanent access for up to 24 links. The flexible modular design allows tapping fiber links - from 1G up to 100G - including 40/100G SR4 and Cisco BiDi. Different fiber types and split ratios can be mixed - all in the same high density chassis. Individual Tap Modules are of ruggedized all-metal construction. The chassis can be partially or fully populated with a mix of modules, based on the needs of the location. Impact on network performance is exceptionally low, with latency of <10 ns, and does not affect reliability.



Metal Module Handle



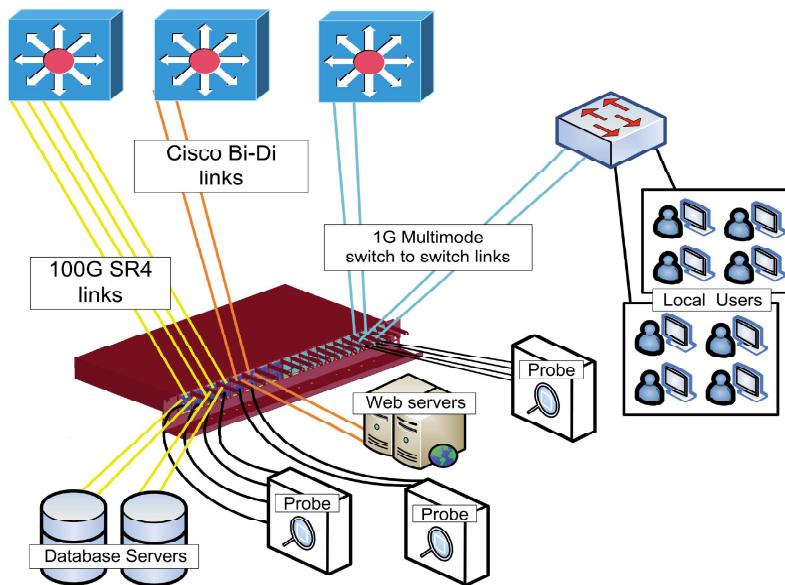
Magnet and Alignment Pin

## Highlights

- Innovative design allows up to 24 individual Tap Modules in 1 rack unit of height - optimizes data center rack usage
- Rugged fireproof metal module housing ensures proper fit of all Tap Modules into chassis
- Integrated rear magnets and alignment pins provide easy swap-outs and "snap-to" alignment for every Tap Module
- Thin film optical couplers and OM4 Corning ClearCurve™ fiber ensure predictable insertion loss and maximum stability
- Available in single mode and multimode with LC or MTP connectors (dependent on topology)
- Cable management tray allows proper cable dressing and adherence to bend radius standards
- Metal handles allow easy installation and convenient cable securing point on every module
- Provides full visibility - passes all full-duplex traffic (including errors) from all layers
- Supports up to 24 of the LC connector Tap Modules or 16 MTP connector Taps per 1U (or any combination of types)

## Benefits

- Flexible - modules are available in custom split ratios and mixed fiber types
- Scalable - add more tap modules as the number of links increases
- Easy to install - individual modules can be added or swapped without interrupting other links
- Cost effective - lower overall cost than fixed tap systems
- Passive and non-powered - no IP Address - 100% secure and immune to remote attacks
- Guaranteed signal integrity - highest quality components used
- Consistent - thin film couplers deliver stable predictable insertion loss without the variation of fused optical couplers
- Full visibility - passes all full-duplex traffic (including errors) from all layers



## Technical Specifications

### MODULES

Two LC connector pairs per module for Tap connections to network link endpoints  
(MTP connectors used for SR4 and 100G modules)

### MONITOR PORTS

One LC connector pair per module (both ports Tx) for Monitor connections to Monitoring tools or Network Packet Brokers  
(MTP connectors used for 40/100GBASE-SR4 modules)

### INSERTION LOSS\*

Multimode 50/50: 1G = 4.5 dB | 10G = 3.9 dB  
 Multimode 70/30: 1G = 2.0 / 6.1dB | 10G = 3.1 / 5.1dB  
 Singlemode 50/50 = 3.9 dB  
 Singlemode 70/30 = 2.2 / 6.3 dB  
 Singlemode LR4 DeMux 50/50 = 4.8 dB  
 Singlemode LR4 DeMux 70/30 = 6.8 / 2.8 dB

\*Insertion loss for 60/40, 80/20, and 90/10 provided on request

### WEIGHT

\* provided on request \*

### PHYSICAL DIMENSIONS (H x W x D)

Rack Mount Chassis 1.785"x19"x8.45"  
 Cable Management Tray: .863"x19"x2"  
 Standard LC Modules: 1.638"x0.659"x8.40"  
 MTP / 40/100GBASE-SR4 / BiDi modules: 1.638"x1.005"x8.40"  
 DeMux modules: 1.638"x1.248"x8.40"

### ENVIRONMENTAL

Operating Temperature: 32° to 104°F (0° to 40°C)  
 Storage Temperature: -22° to 149°F (-30° to 65°C)  
 Humidity: 5 to 90% non-condensing

### CERTIFICATIONS

CE, ROHS

### WARRANTY

Two (2) Year Standard Hardware Warranty

## Ordering Details

Product	Description	Product	Description
FTC-24	Rack Mount Chassis - holds up to 24 modules	FTC-509	50/50 Module (9 micron) <sup>1</sup>
FTCT-24	Cable Management Tray	FTC-609	60/40 Module (9 micron) <sup>1</sup>
FTC-505	50/50 Module (50 micron)	FTC-709	70/30 Module (9 micron) <sup>1</sup>
FTC-605	60/40 Module (50 micron)	FTC-809	80/20 Module (9 micron) <sup>1</sup>
FTC-705	70/30 Module (50 micron)	FTC-909	90/10 Module (9 micron) <sup>1</sup>
FTC-805	80/20 Module (50 micron)	FTC-50-SR4	50/50   100GBASE-SR4 Module (50 micron) <sup>2</sup>
FTC-905	90/10 Module (50 micron)	FTC-70-SR4	70/30   100GBASE-SR4 Module (50 micron) <sup>2</sup>
FTC-506	50/50 Module (62.5 micron)	FTC-505-BIDI	50/50   Cisco BiDi Module (50 micron) <sup>2</sup>
FTC-606	60/40 Module (62.5 micron)	FTC-705-BIDI	70/30   Cisco BiDi Module (50 micron) <sup>2</sup>
FTC-706	70/30 Module (62.5 micron)	FTC-509+DEM1	50/50   LR4 DeMux module (9 micron) <sup>2</sup>
FTC-806	80/20 Module (62.5 micron)	FTC-709+DEM1	70/30   LR4 DeMux module (9 micron) <sup>2</sup>
FTC-906	90/10 Module (62.5 micron)		

\* 1) Supports all speeds up to 100G

2) Chassis holds up to 16 of this module type

[www.datacomsystems.com](http://www.datacomsystems.com)

