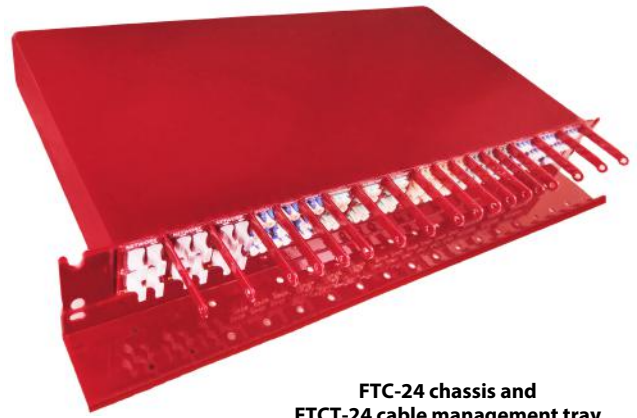


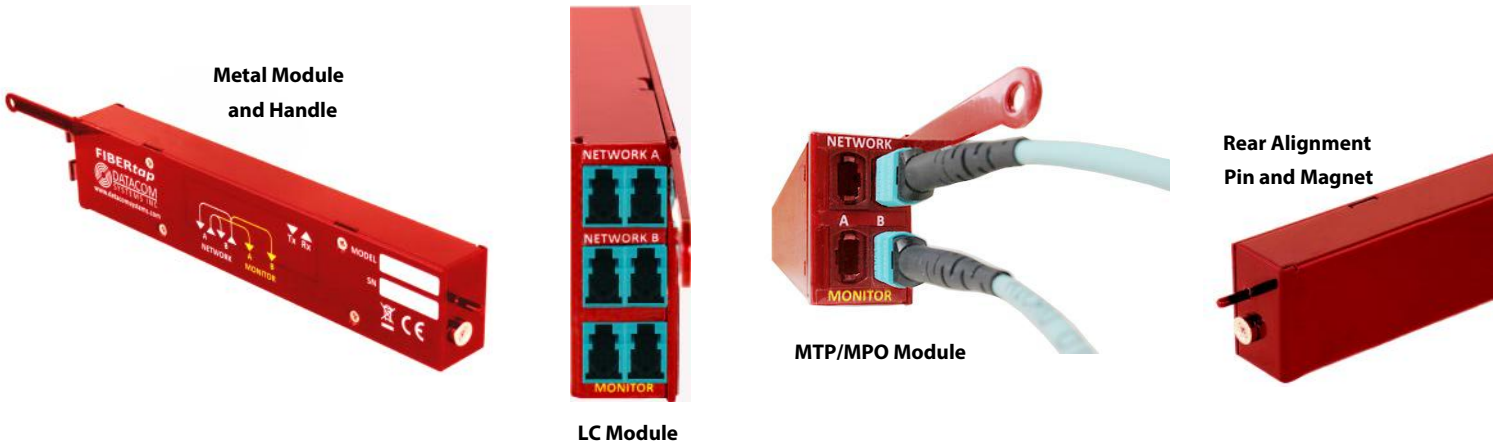
Modular Fiber Tap System

Tap up to 24 links 1G to 100G*



FTC-24 chassis and
FTCT-24 cable management tray

Ideal for security, network monitoring and analysis - anywhere that high density and maximum flexibility are required for monitoring multiple fiber links. This modular passive Tap system provides permanent access for up to 24 links. The flexible design allows tapping fiber links - from 1G up to 100G - including 40/100G SR4, 40G SR2, 10G BiDi, and 40G BiDi. Different fiber types and split ratios can be mixed - all in the same high density chassis. Individual Tap Modules are of ruggedized all-metal construction. The chassis can be partially or fully populated with a mix of modules, based on the needs of the location. Impact on network performance is exceptionally low, with latency of <10 ns, and does not affect reliability. Completely passive fault tolerant design. Links stay up even during outage or failure. Provides permanent access into as many as 24 fiber links. (* 9 micron modules support 100G)

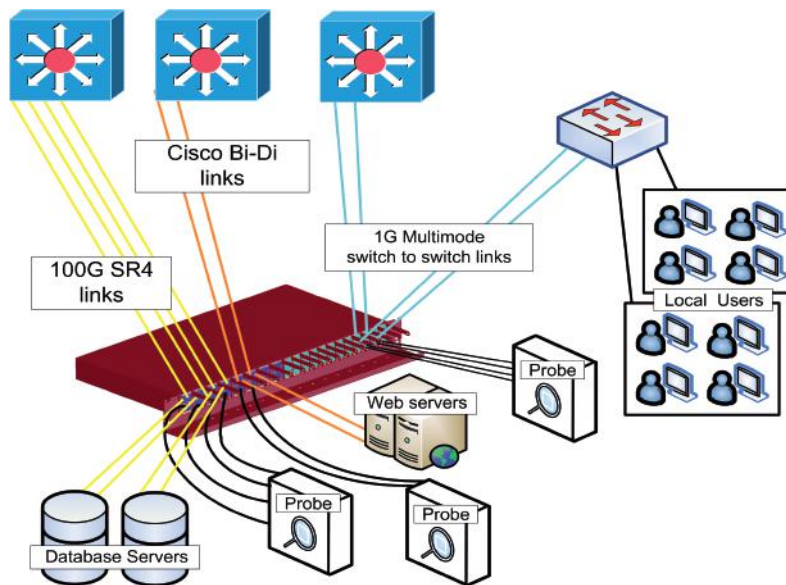


Highlights

- Innovative design allows up to 24 individual Tap Modules in 1 rack unit of height - optimizes data center rack usage
- Rugged fireproof metal module housing ensures proper fit of all Tap Modules into chassis
- Integrated rear magnets and alignment pins provide easy swap-outs and "snap-to" alignment for every Tap Module
- Thin film optical couplers and Corning ClearCurve™ fiber ensure predictable insertion loss and maximum stability
- Available in single mode and multimode with LC or MTP/MPO connectors (dependent on topology)
- Cable management tray allows proper cable dressing and adherence to bend radius standards
- Metal handles allow easy installation and convenient cable securing point on every module
- Provides full visibility - passes all full-duplex traffic (including errors) from all layers
- Supports up to 24 of the LC connector Tap Modules or 16 MTP/MPO connector Taps per 1U (or any combination of types)

Benefits

- Flexible - modules are available in custom split ratios and mixed fiber types
- Scalable - add more tap modules as the number of links increases
- Easy to install - individual modules can be added or swapped without interrupting other links
- Cost effective - lower overall cost than fixed tap systems
- Passive and non-powered - no IP Address - 100% secure and immune to remote attacks
- Guaranteed signal integrity - highest quality components used
- Consistent - thin film couplers (most models) deliver stable predictable insertion loss
- Full visibility - passes all full-duplex traffic (including errors) from all layers



Technical Specifications

MODULES

Two LC connector pairs per module for Tap connections to network link endpoints
(MTP/MPO connectors used for SR4 modules)

MONITOR PORTS

One LC connector pair per module (both ports Tx) for Monitor connections to Monitoring tools or Network Packet Brokers
(MTP/MPO connectors used for 4SR4 modules)

INSERTION LOSS

Multimode 50/50: 1G = 4.0 dB
 Multimode 70/30: 1G = 2.15 / 6.95dB
 Singlemode 50/50 = 3.95 dB
 Singlemode 70/30 = 2.1 / 6.9 dB
 Singlemode LR4 DeMux 50/50 = 4.8 dB
 Singlemode LR4 DeMux 70/30 = 6.8 / 2.8 dB

(Alternate split ratios also available)

CERTIFICATIONS

CE, ROHS

PHYSICAL DIMENSIONS (H x W x D)

Standard LC Modules: 1.638 x 1.005 x 8.40" (4.161 x 2.553 x 21.336 cm)
 MTP/MPO / SR4 / BiDi modules: 1.638" x 1.005" x 8.40" (4.161 x 2.553 x 21.336 cm)
 DeMux modules: 1.638" x 1.248" x 8.40" (4.161 x 3.16992 x 21.336 cm)
 FTC-24 Rack Mount Chassis 1.750 x 18.986 x 8.571" (4.445 x 48.224 x 21.770 cm)
 FTCT-24 Cable Management Tray: 0.863 x 19.00 x 2.00" (2.192 x 48.260 x 5.080 cm)

ENVIRONMENTAL

Operating Temperature: 32° to 104°F (0° to 40°C)
 Storage Temperature: -22° to 149°F (-30° to 65°C)
 Humidity: 5% to 90% non-condensing

WEIGHT

FTC Modules 0.50 lbs (0.227 kgs)
 FTC-24 1.255 lbs (0.567 kgs)
 FTCT-24 5.50 lbs (2.495 kgs)

WARRANTY

One (1) year Return to Factory parts and labor warranty included.
 Advance replacement coverage available.

Ordering Details

Product

Product	Description
FTC-24	Rack Mount Chassis - holds up to 24 modules
FTCT-24	Cable Management Tray
FTC-505*	50/50 Module (50 micron)
FTC-705*	70/30 Module (50 micron)
FTC-506	50/50 Module (62.5 micron)
FTC-706	70/30 Module (62.5 micron)
FTC-509*	50/50 Module (9 micron)
FTC-709*	70/30 Module (9 micron)

Product

FTC-50SR4	50/50 40/100GBASE-SR4 Module (50 micron)**
FTC-70SR4	70/30 40/100GBASE-SR4 Module (50 micron)**
FTC-505-BIDI-10G	50/50 10G BiDi Module (50 micron)**
FTC-705-BIDI-10G	70/30 10G BiDi Module (50 micron)**
FTC-705-BIDI-40G	50/50 40G BiDi Module (50 micron)**
FTC-505-BIDI-40G	70/30 40G BiDi Module (50 micron)**
FTC-709+DEMIX1	50/50 LR4 DeMux module (9 micron)**
FTC-509+DEMIX1	70/30 LR4 DeMux module (9 micron)**

* Supports all speeds up to 100G

** Chassis holds up to 16 of this module type

WARRANTY

One (1) year Return to Factory parts and labor warranty included.
 Advance replacement coverage available.

www.datacomsystems.com